

TAICHUNG METROPOLITAN OPERA HOUSE

Introduction

"Taichung Metropolitan Opera House" is a project in Taichung city, Taiwan. It includes shopping area, restaurants, cafés and landscaping of urban park, as well as three theatres: Grand Theatre for Western and Chinese opera with 2011 seats, Playhouse mainly for drama with 800 seats, and Black Box for experimental performances with 200 seats.

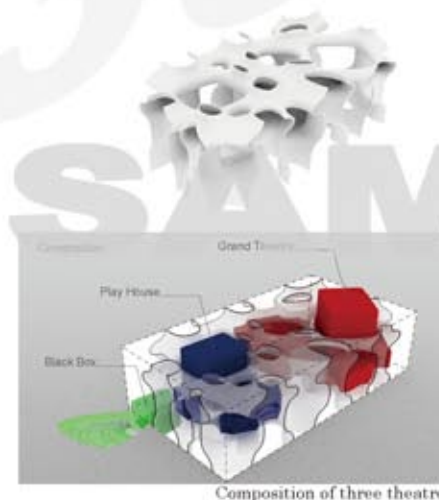
By encouraging exchange and communication, the Taichung Metropolitan Opera House accommodates a rich diversity of cultural activities. The fluid continuity of the structure reflects the idea that the theatrical arts are spatial arts which combine the body, art, music, and performance. While providing optimum settings for traditional Eastern and Western types of performances, our design for the Taichung Opera moves beyond the constraints of a traditional Opera House. We are envisaging an open structure which actively engages its surroundings in all directions and creates opportunities for myriad encounters between high art and popular art, artists and visitors, stage and auditorium, interior and exterior. We call this space the "Sound Cave".

The Sound Cave is a both horizontally and vertically continuous network. Even before entering one of the three

theatres, the Sound Cave is perceived as a fascinating and flexible "acoustic space", which - in three dimensions - connects Arts Plaza, workshops, foyers, restaurants and so on. Located in a park within a dense urban high-rise development, the Sound Cave is not only interior, but connects seamlessly with the outside, merging with the surrounding park and creating a place of communication between visitors and artists. Neurone-like networks of water and greenery continue in the park and thereby integrate the building in its urban surroundings.

The spatial complexity is based on a few simple geometric rules. To fulfill the requirements of this project, we proposed a system called the "Emerging Grid", or generative grid, to organize the whole out of the constituent parts. This is a topological grid system in which 2-dimensional plans plotted according to the programs and functions of each floor are developed into a space with a continuous 3-dimensional curved surface. By developing this system, the internal space including the three theatres finds a form like the continuum of a cave, and stimulates the connection between visitor and artist.

Now the design phase was completed after the challenging design process since 2005. The construction phase is going to start in the end of 2009. This new architecture will appear within several years.



Composition of three theatres



A Photo of the site area before construction of TMOH

DATA SHEET

Title: Taichung Metropolitan Opera House
 Location: Taichung City / Taiwan R.O.C.
 Design: from September 2005
 Construction: from 2009 to 2013, expected
 Client: Taichung City
 Program: Theatre, Shop, Restaurant, Park
 Structure/Size: Reinforced concrete, Steel (partially) / 6 stories, 2 basements
 Site area: 57,020.46 sqm
 Building area: 6,226.70 sqm
 Total floor area: 24,001.36 sqm

Architect:

TOYO ITO & ASSOCIATES, ARCHITECTS (Japan)
 Local Architect:
 DA JU ARCHITECTS & ASSOCIATES (Taiwan)

Structural Engineers:

Arup (London)
 Evergreen Consulting Engineering, Inc. (Taiwan)

Mechanical Engineers:

Kanryo Engineering Inc. (Japan)
 Takenaka Corporation (Japan)
 I.S.L.I.N & ASSOCIATES CONSULTING ENGINEERS (Taiwan)
 Harder Engineering & Construction Inc. (Taiwan)

Fire Safety Design:

ATAKA Fire Safety Design Office (Japan)
 Taiwan Fire Safety Consulting, Ltd. (Taiwan)
 FORERUN Engineering Consultant Co., Ltd. (Taiwan)

Acoustic consulting:

Nagata Acoustics Inc. (Japan)
 National Taiwan University of Science and Technology (Taiwan)

Theater consulting:

Shozo Motozugi (Japan)
 Beas Engineering Co. Ltd. (Japan)
 Lighting Company AKASUGUMI (Japan)
 Nagata Acoustics Inc. (Japan)

Lighting Design:

Inami Okazaki Lighting Design (Japan)

2M Consulting:

Lead Dao Technology and Engineering LTD. (Taiwan)

Landscape Design:

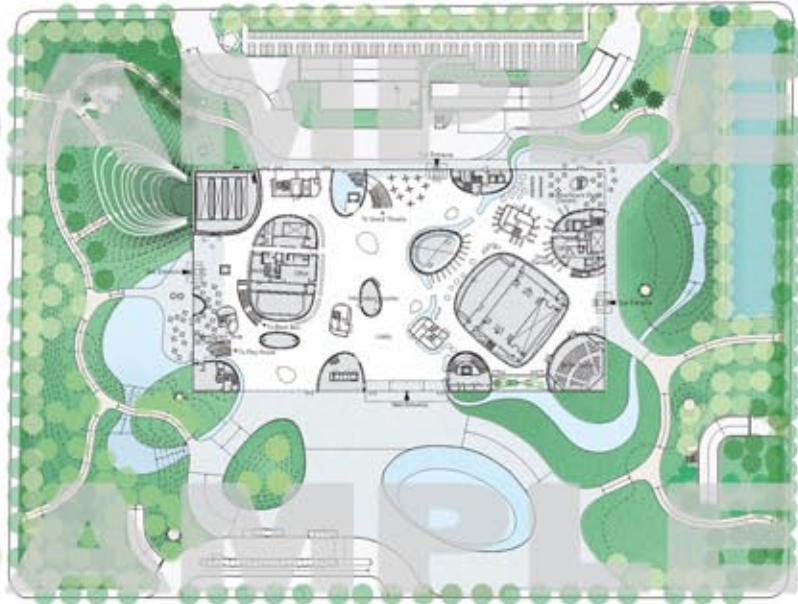
OLD FARMER LANDSCAPE ARCHITECTURE CO. (Taiwan)

Furniture Design:

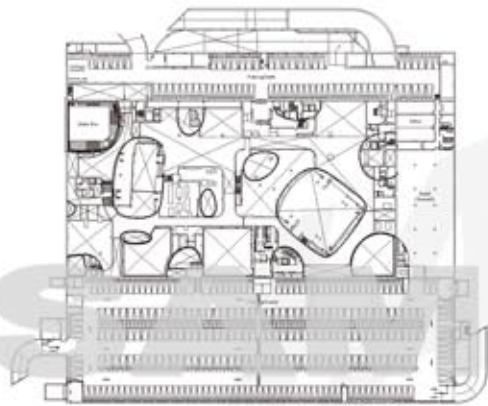
Fujie Kazuhiko Atelier (Japan)

*当コンペティション以外への図面資料の使用、および他者への譲渡を禁じます。

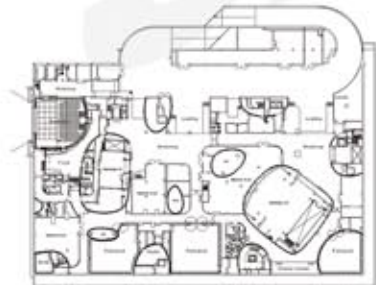
* The use of drawings and/or distribution of such materials to others outside of this competition is strictly prohibited.



1F Plan scale:1/1200



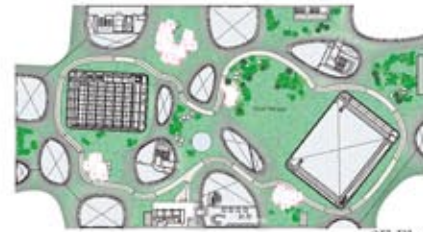
B1F Plan scale:1/2000



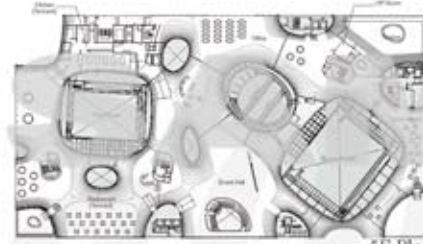
B2F Plan scale:1/2000



Site Plan scale:1/12000



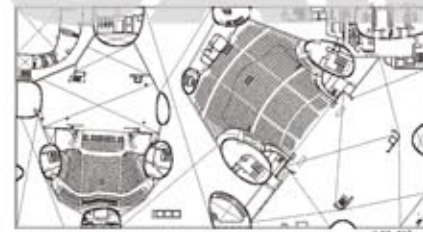
6F Plan



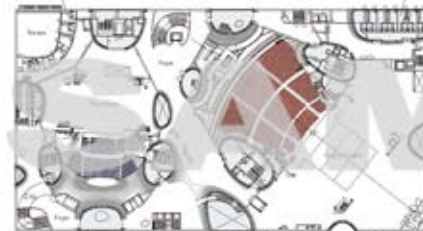
5F Plan



4F Plan



3F Plan



2F Plan scale:1/1600



Interior images

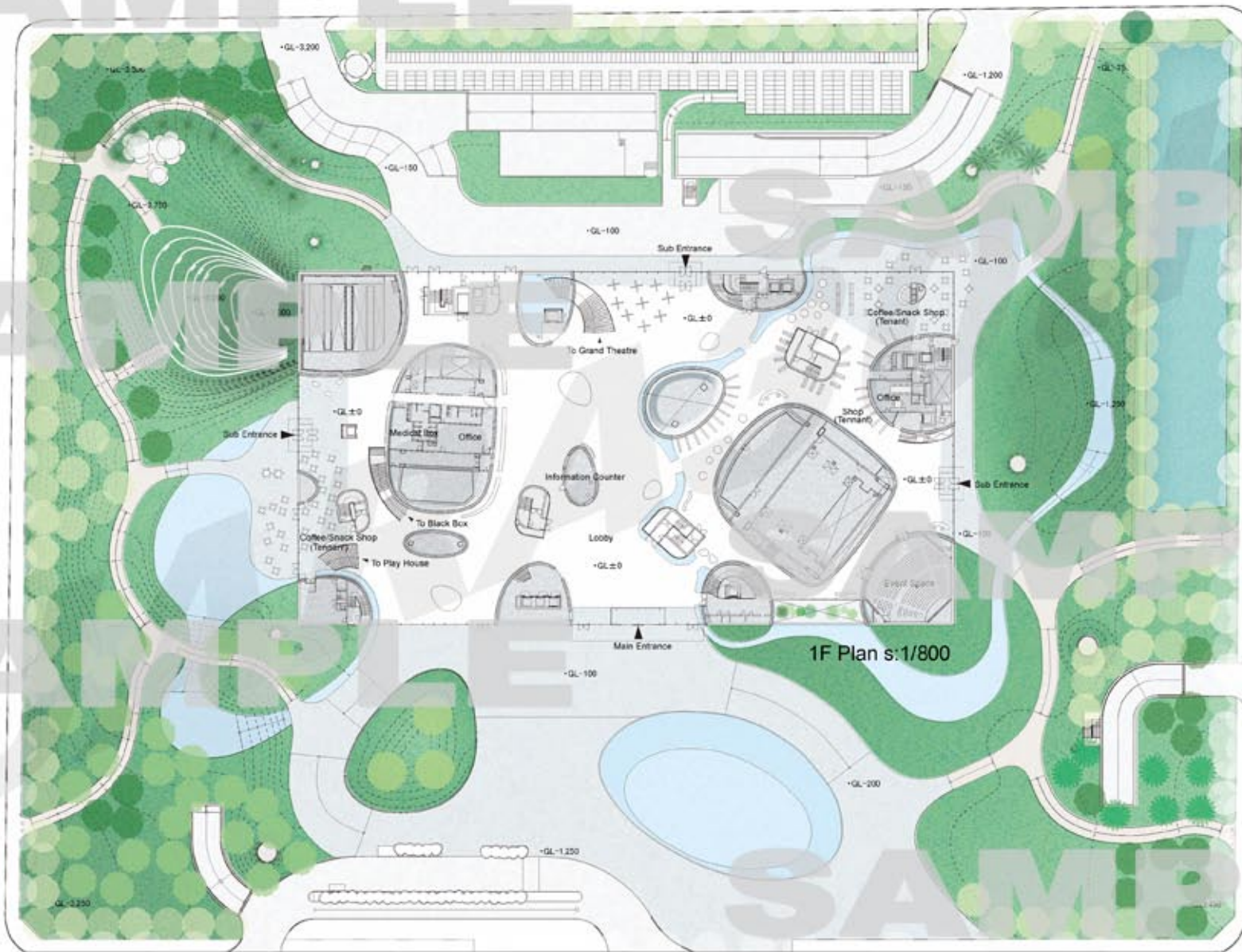
*当コンペティション以外への図面資料の使用、および他者への譲渡を禁じます。

* The use of drawings and/or distribution of such materials to others outside of this competition is strictly prohibited.

台中 Metropolitan オペラハウス
Taichung Metropolitan Opera House

© Toyo Ito & Associates, Architects

SAMPLE

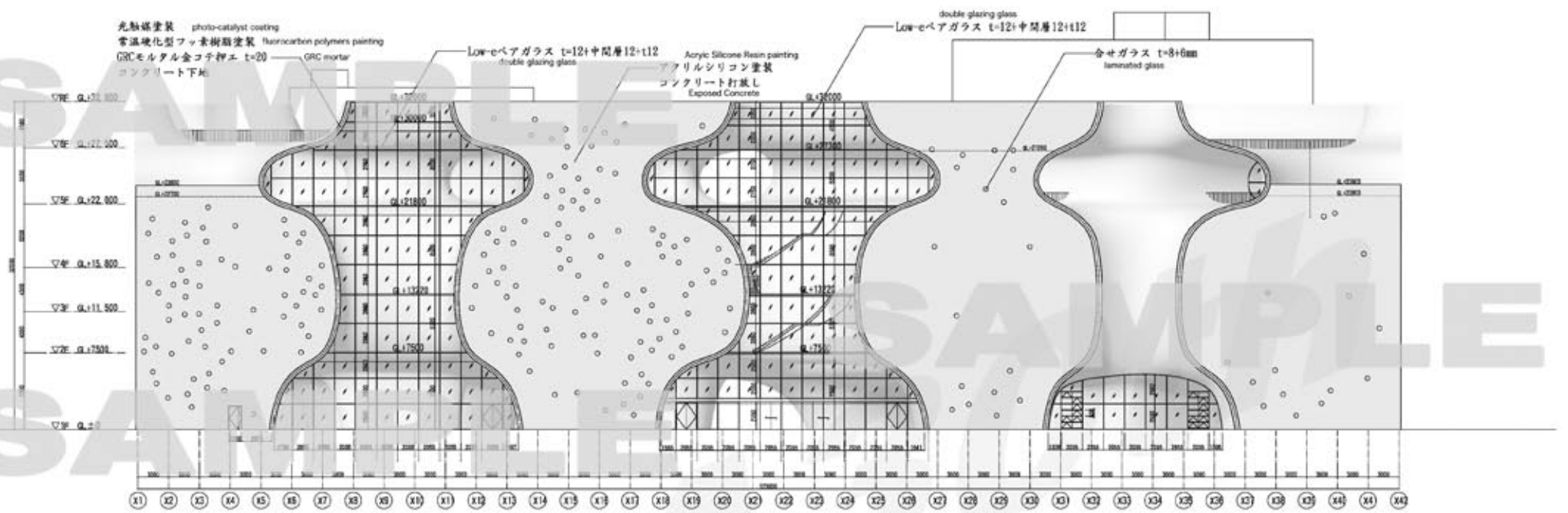


*当コンペティション以外への図面資料の使用、および他者への譲渡を禁じます。

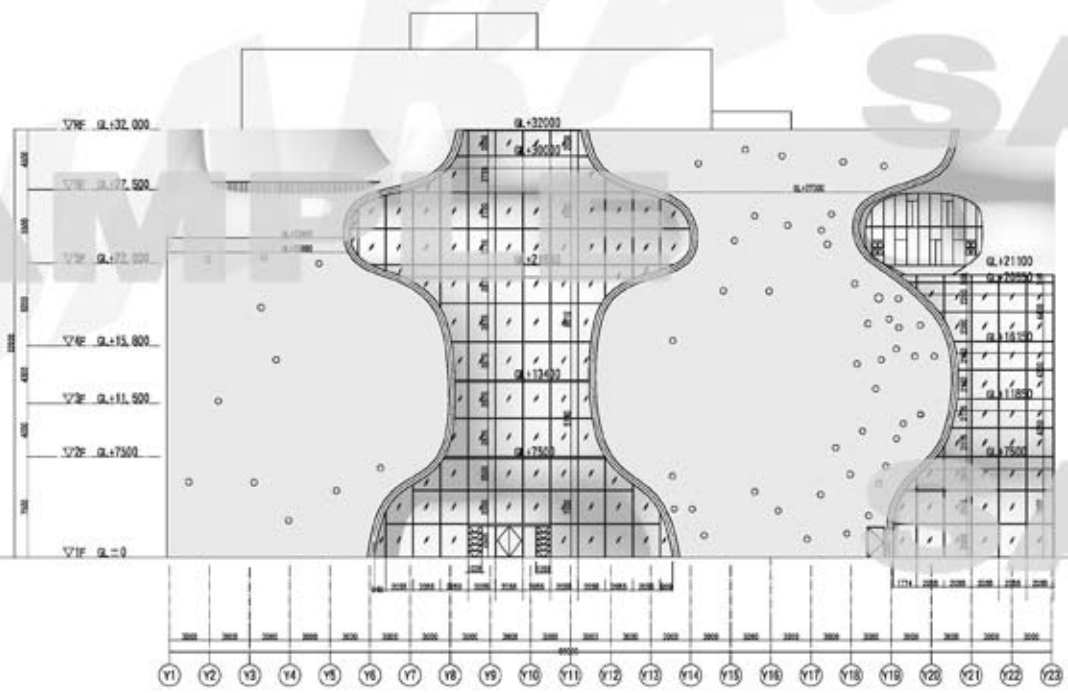
* The use of drawings and/or distribution of such materials to others outside of this competition is strictly prohibited.

台中 Metropolitan Opera House
Taichung Metropolitan Opera House

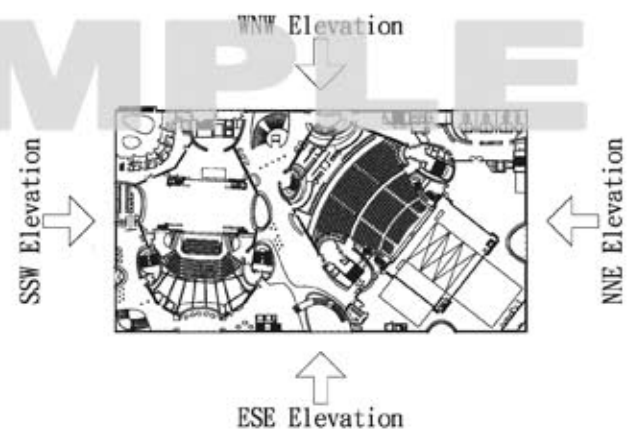
© Toyo Ito & Associates, Architects



ESE Elevation s:1/400



NNE Elevation s:1/400



台中 Metropolitan オペラハウス
 Taichung Metropolitan Opera House

© Toyo Ito & Associates, Architects

*当コンペティション以外への図面資料の使用、および他者への譲渡を禁じます。
 * The use of drawings and/or distribution of such materials to others outside of this competition is strictly prohibited.



photo of the site area (2009)



*当コンペティション以外への図面資料の使用、および他者への譲渡を禁じます。

* The use of drawings and/or distribution of such materials to others outside of this competition is strictly prohibited.